

Sales Guide

MP C6503SP
MP C8003SP

- ☑
- ☑
- ☑
- ☑



MP C8003SP

MP C6503SP





Contents:

1	Introduction	Page 3
2	Quick Overview	Page 4
3	Sales Highlights	Page 6
4	Product Positioning	Page 8
5	Configuration	Page 9
6	Target Markets	Page 11
7	Smart Operation Panel	Page 12
8	Key Features	Page 15
9	Specifications	Page 25
10	Service and Supplies	Page 35

This sales guide is to be used by sales staff as a training aid. It is not a sales tool and should not be shared with customers. Whilst care has been taken to ensure the information provided in this guide is accurate, no liability will be accepted for errors or omissions.

1. Introduction

MP C6503SP and MP C8003SP are departmental powerhouses. They deliver high quality colour and b/w print at high speed. They can be used to produce professionally finished documents and to print transactional documents, such as invoices generated by mainframe systems. For a faster return on investment, they can also be used to print high volume, high value transactional documents.

The new MFPs bring production performance to the general office. The integral SPDF scans double-sided originals in a single pass and the finishing systems fold, punch and staple document sets. The paper capacity can be increased to 8,100 sheets and given that the operator can replenish toner and paper on-the-fly, the new MFPs can print virtually non-stop.

The new MFPs produce high resolution colour output. The imaging system employs VCSEL technology (vertical cavity surface emitting lasers) and ultra-fine PxP chemical toner to print beautifully rendered output. And, with accurate front-back registration, they can be used to produce high impact customer-facing documents, like brochures, in house.

The new models are the most productive colour MFPs in Nashuatec office range. A new toner control system optimises toner use and enhancements to the paper transport mechanism improve registration and increase reliability. New sound suppression technology reduces operating noise by up to 60%, making the new MFPs the quietest in their class.

Perhaps the most significant improvement is the addition of Nashuatec's award winning Smart Operation Panel which offers a tactile and immersive user experience. It is brightly lit, instantly responsive and easy to use. The new MFPs can be installed as part of a uniform enterprise-wide solution.

A sensor wakes the new MFPs when a user approaches and the 10.1" Smart Operation Panel lights up when touched, allowing the user to logon and pre-select applications and settings. The Smart Operation panel is equipped with a web browser that allows users to view and print web content. The Nashuatec's Smart Device Connector improves access and allows users to interact with the device using smart phones and tablets.

The MFPs also support Quick Authentication. The simple swipe-and-go card-based authentication system is fast and secure. It eliminates the need for users to remember login details and prevents sensitive documents from being viewed, copied or sent to unauthorised users.

This guide explores the functionality of the new MFPs, highlighting sales opportunities and identifying key selling points. It also provides side-by-side competitors comparisons.



2. Quick Overview

MP C6503SP and MP C8003SP are high speed colour MFPs. Designed for business use, they deliver vibrant, high quality customer communication at production pace. The new MFPs offer colour print, copy and scan functionality as standard and are equipped with high speed single-pass duplex feeders (SPDFs) that streamline scanning processes. Sharing the same intuitive 10.1" Smart Operation Panel as other Nashuatec devices, the new MFPs can be installed as part of a uniform enterprise-wide solution.

The main specifications are:

- Full colour A3 MFPs
- Floor-standing console design
- 65 ppm and 80 ppm versions
- Colour print, copy and scan enabled
- 4,800 x 1,200 dpi print resolution
- Options to add up to 3 fax lines
- Single-pass duplex feed (SPDF)
- 3,700 / 8,100 sheet paper supply (standard/ maximum)
- Nashuatec GWNX (S16) controller
- 1.91 GHz Intel® Atom Processor (Bay Trail-I)
- 10.1 inch Smart Operation Panel

The main specifications are:

- Intuitive User Interface (smart apps)
- 4 GB RAM and 2 x 320 GB hard disk drive
- USB/SD card reader
- PCL 5e/6 and PDF Direct (standard) / PS3, XPS and IPDS (options)
- IPDS print option supports mainframe print applications

A full list of options, order codes and configurations dependencies is provided in section 5. Configuration

Functionality, Feeds and Speeds		
	MP C6503SP	MP C8003SP
Functionality	A3 colour printer, copier and scanner (standard) / fax (option)	
Document Feed	220 sheet SPDF (standard)	
Duplex	Automatic duplex (standard)	
Paper Supply	3,700 sheets (standard) [2 x 1,250 sheet tandem + 2 x 550 sheet trays + 100 sheet bypass] / 8,100 sheets (maximum) [with optional 4,400 sheet A4/LT LCT]	
Paper Output	500 sheets (minimum) [with copy tray] / 3,500 sheets (maximum) [with 3,000 sheet finisher]	
First Page	5.5/7.5 sec (BW/FC)	4.7/6.3 sec (BW/FC)
Continuous	65/65 ppm (BW/FC)	80/80 ppm (BW/FC)
Paper Sizes	A6 (90 x 140 mm minimum) to SRA3 and banner (330 x 1,260 mm maximum)	
Paper Weights	52 to 256 gsm (standard tray), 52 to 300 gsm (bypass), 52 to 256 gsm (duplex), 52 to 216 gsm (A4/LT LCT), 52 to 300 gsm (A3/DLT LCT)	

2. Quick Overview

Feed and finishing options include:

- RT4020 4,400 sheet A4/LT LCT, or RT4030 2,200 sheet SRA3/DLT LCT
- SR4110 3,000 sheet finisher (100 sheet stapler), or SR4120 3,000 sheet finisher (65 sheet stapler), or SR4130 2,000 sheet booklet finisher (65 sheet)
- FD4000 multi folding unit (for SR4110/SR4120/SR4130)
- CI4010 cover sheet interposer (for SR4110), or CI4020 cover sheet interposer (for SR4120/SR4130), or CS4010 9-bin mailbox (for SR4120/SR4130) GBC stream punch® (for SR4110)
- Plockmatic booklet maker® (for SR4110)

Quick overview

	MP C6503SP	MP C8003SP
Average Monthly Volume	20,000 pages	30,000 pages
Maximum Monthly Volume	150,000 pages	
Duty Cycle	300,000 pages	
PM Cycle	300,000 pages	
MCBC	60,000 pages	
Target Life	9 million pages or five years, whichever comes first	

2. Quick Overview

Weights and dimensions	
Mainframe [including SPDF]	250 kg / 750 x 880 x 1,225 mm
LCIT RT4020	44 kg / 353 [500 with LG unit] x 540 x 625 mm
LCIT RT4030	82 kg / 869 x 730 x 658
Finisher SR4120	38 kg / 657 x 730 x 980 mm
Booklet Finisher SR4130	58 kg / 657 x 730 x 980 mm
Output Jogger Unit Type M25	2 kg / 143 x 539 x 218 mm
Cover Interposer Tray CI4040	12 kg / 500 x 600 x 600 mm
Mail Box CS4010	15 kg / 540 x 600 x 660 mm
Multi-Folding Unit FD4000	92 kg / 470 x 980 x 730 mm
Finisher SR4110	75 kg / 806 x 730 x 980 mm
Cover Interposer Tray CI4020	45 kg / 540 x 730 x 1270 mm
GBC SP Ultra MP	95 kg / 445 x 1,000 x 730 mm
PBM350-m	144 kg / 700 x 880 x 1,225 mm [2,830 x 800 x 1,225mm when configured with all options]
PBM500-m Upgrade Kit	1 kg / [internal option, included within dimensions of booklet maker]
PBM-m Cover Feeder	7 kg / [internal option, included within dimensions of booklet maker]
PBM-m Trimmer	76kg / 360 x 900 x 620 mm
PBM-m Book Fold	60 kg / 360 x 900 x 620 mm
PBM-m Rail Unit	3 kg / 1,200 x 70 x 600 mm
PBM-m Belt Stacker	70 kg / 1,500 x 540 x 550 mm

3. Sales Highlights

Departmental powerhouses

MP C6503 and MP C8003SP bring production performance to the general office. Vibrant 1,200 x 4,800 dpi print output is delivered at high speed. Automating job build, the integral SPDF scans double-sided originals in a single pass and optional inline finishing systems fold, punch and staple document sets. The standard paper capacity of 3,700 sheets can be increased to a 8,100 sheets and, with auto tray switching enabled and the operator able to replenish toner and paper on-the-fly, the new MFPs can print virtually non-stop.

- Vibrant 1,200 x 4,800 dpi print output is delivered at production pace 65 ppm and 80 ppm print engines effortlessly meet departmental needs
- Two MFPs can be operated in tandem, doubling the speed and capacity (requires copy connector)
- In-line options automate folding, punching, stapling and booklet making



One-stop print solution

For a fast return on investment, Nashuatec's new MFPs can also be used to print high volume, high value transactional documents. When configured with the genuine IPDS print option, they offer a productive and cost effective host print solution, and can be used to print dispatch notes, invoices and statements generated by mainframe computer systems. To maintain productivity, transactional print can be scheduled to run overnight or at the weekend.

- Genuine IPDS print option for accurate printing of transactional documents
Use MP C6503SP and MP C8003SP to print dispatch notes, invoices and reports
Improve customer response rates by adding colour impact to communication
- Low total cost of ownership, durable and productive performance
To maintain productivity, invoices and statements can be printed overnight

Intuitive operation

Sharing the same operating system and print driver as other Nashuatec MFPs, MP C6503SP and MP C8003SP can be installed as part of a uniform enterprise-wide solution. A sensor wakes the device when an operator approaches and the 10.1" screen lights up when touched allowing the user to select applications and settings. The Smart Operation Panel is navigated with pinch, swipe and touch gestures, much like a smart phone, and the Intuitive User Interface includes easy to use copy, scan, fax and print apps.

- MP C6503SP and MP C8003SP feature Nashuatec's new Smart Operation Panel
- A human detection sensor wakes the machine and the screen lights up when touched
- Nashuatec's Intuitive User Interface includes easy to use copy, scan, fax and print apps
- Point-and-print PCL and PS3 print drivers make it easy to select complex print settings
- Settings, such as booklet printing, can be applied to documents printed from USB/SD card



3. Sales Highlights

Broad media support

- Customer-facing brochures, proposals and banners can be printed in-house
 - Support for a wide range of media, including SRA3 paper and banner stock
 - Heavyweight media of up to 256 gsm can be fed from standard trays for duplex printing
 - The bypass tray can feed 300 gsm media and will automatically detect paper sizes
- The new MFPs systems support 3-edge full-bleed printing



Outstanding image quality

The new MFPs produce vibrant high resolution colour output. The imaging system employs VCSEL technology (vertical cavity surface emitting lasers) and ultra-fine PxP chemical toner to print beautifully rendered output (4,800 x 1,200 dpi) at full engine speed. The toner has a wide colour gamut, producing vivid life-like colours with smooth tonal gradation. And, with accurate font-back registration, the new MFPs can be used to produce high impact customer-facing documents, such as brochures, in house.

- Vivid lifelike colours, smooth tonal gradation and fine lines
- Optical waveform correction ensures fine, well defined vertical lines
- Automatic bow and skew correction eliminates colour shift
- Print colour graphics, complete with crop mark, onto heavyweight SRA3 paper



Controlled workflow

Nashuatec's GWNX (S16) controller, with its superfast 1.91 GHz Intel processor, manages the workflow and accounts for usage. The administrator can predetermine scan settings, print output can be locked until released by the originator and security information can be appended to each and every document. The new MFPs also support optional workflow solutions, such as StreamLine NX, which enables follow-you printing, and GlobalScan NX, which integrates paper documents into a digital workflow.

- GWNX (S16) controller securely manages workflows and accounts for usage
 - Superfast (Intel® 1.91 GHz) Intel processor ensures responsive performance
 - Save scanned documents with searchable text (requires OCR option)
 - Lock print output and append security information to every document
- Deploy enterprise workflow solutions, such as StreamLine NX and GlobalScan NX



4. Product Positioning

- Productive, high volume A3 colour MFPs
- Replacements for MP C6502SP and MP C8002SP
- Quickly and easily produce high quality colour print
- Shared departmental device
- Dedicated print room facility

MP C6503SP/MP C8003SP are high speed and volume colour MFPs which deliver high quality print at production speed. Sharing the same intuitive operating system as Nashuatec's latest office MFPs, they can be deployed as shared departmental systems or as dedicated print room devices.

The new models are the most productive colour MFPs in the Nashuatec office lineup. A new toner control system optimises toner use, whilst enhancements to the paper transport mechanism improve registration and reliability. New sound suppression

technology reduces operating noise by 40%-60%, making them the quietest in their class.

A significant improvement is the addition of Nashuatec's Smart Operation Panel. It offers a major point of differentiation, expanding functionality and making these MFPs more accessible and easier to use. The large 10.1" panel lights up when the operator approaches, providing an intuitive interface that speeds operation. And users can print to and scan from the MFPs using their smart devices.

	Nashuatec Nashuatec MP C8003/6503	Xerox WorkCenter7970	Xerox Color C70/ C60(new)	Fuji Xerox Docucentre V C7785/6658/5585	Canon RA C7270/7260	Konica Minolta bizhub C 754e/ 654e	Konica Minolta bizhub C658
Launch date		Sep.2014	Sep.2015	Oct. 2015	Apr.2013	Jul. 2013	Sept. 2016
Operation Panel	10.1 inch touch panel	9 inch touch panel	10.4 inch	9 inch touch panel	8.4 inch color touch panel *Option: 10.4	8.4 inch color touch panel	10.1 inch touch panel
PPM BW/C	80ppm/80ppm 65ppm/65ppm	70ppm/70ppm	75ppm/ 70ppm 65ppm/ 60ppm	75ppm/70ppm 65ppm/60ppm 55ppm/50ppm	75ppm/60ppm 65ppm/55ppm	75ppm/ 60ppm 65ppm/ 60ppm	65ppm/ 65ppm
Scanner productivity	Simplex: 120ipm Duplex 220ipm	Duplex 130ipm	Duplex 200ipm *SPDF	Duplex: 160ipm	Simplex: 120ipm Duplex 200ipm	Simplex: 90ipm Duplex 180ipm	CCD 120 ipm
Print resolution	1,200*4,800dpi	1,200*2,400dpi	2,400*2,400 dpi	2,400*2,400dpi	1,200*1,200dpi	1,200*1,200 dpi	600*600 dpi
WUT	60sec./50sec.	240 Sec	90 Sec.	91 Sec.	Less than 31Sec.	Less than 22Sec.	22 sec.
Recovery time from sleep mode	EU/AP 40 Sec. NA 45sec.	NA	NA	NA	Less than 30Sec	NA	NA
Human sensor	O	NA	NA	NA	X	O	
FCOT	BK5.5Sec/FC 7.5Sec. BK4.8Sec/FC 604Sec.	BK 4.2Sec./ FC6.9Sec.	BK 5.3Sec./ FC6.9Sec.	BK 4.1Sec./ FC6.5Sec.	BK 4.1Sec. / FC6.5Sec.	BK 3.6Sec. / FC5.3Sec. BK 3.7Sec. / FC5.3Sec.	BK 3Sec. / FC 4Sec.

Supported paper size	139.7*139.7mm-330.2*488mm(13*19.2inch)	140*182mm-320*450mm(SRA3)	102*152mm-330*488mm(13*19.2inch)	A5-13*18"(330*457mm)	A5LEF-SRA3(320*450mm)	Post card-SRA3(320*450mm)	Post card-SRA3(320*450mm)
Banner paper support	O -1,200mm	O -1,200mm	O -1,200mm	O -1,200mm	O -630mm	O -1,200mm	O -1,200mm
Supported paper weight	Tray: 52-256g/m2 Bypass tray: 300g/m2	Tray: 60-256g/m2 Bypass tray: 300g/m3	Tray: 64-220g/m2 Bypass tray: 300g/m4	Tray: 64-220g/m2 Bypass tray: 300g/m5	Tray: 52-220g/m2 Bypass tray: 300g/m2	Tray: 52-256g/m2 Bypass tray: 300g/m3	Tray: 52-256g/m2 Bypass tray: 300g/m4
Paper capacity	EXP: 1,250*2+550*2(3,600)	520*2+2,000(3,140) Options: 5,140	500*2+870+1,140+250(3,260) Option: 7,260	500*2+870+1,140+250(3,260)	680*2+1,250*2(3,800)	550*2+1,650+1,110(3,850)	-6650
Mobile connectivity	O Rimoco/Airprint	O Xerox Mobile Print Air Print/Mopria	Xerox Mobile Print	Print Utility for IOS/Android Air Print	O canon Mobile printing	O Page Scope Mobile	Mobile Prinint support
Cloud service connectivity	O Smart SDK	O ConnectKey	O ConnectKey	O	O MEAP	O Bizhub Connector	O
Finishing capability	Bank, Finisher, 9 bin Mailbox, Multifolding Unit, Cover inserter	Bank, Finisher, Folding Unit	Bank, Finisher, BR finisher with booklet maker, C/Z folding Unit, Trimmer Module	Bank, Finisher, Multi FoldinG Unit, Cover Inserter	Bank, Finisher, Folding Inserter Unit	Bank, Finisher, Job Separater, Folding Unit, Post inserter	Finisher. Folding Unit, V/Z fold, Job Separator, Post Inserter
Sound power level (dBA)	At work: 72dBA/69.2dBA	At work: 65.7dBA	At work: 48.8dBA	NA	NA	Na	75dBA
TEC value	a model: 4.48kWh	NA	NA	6.8kWh/ 7.1kWh/ 7.5kWh	4.6kWh/ 4.5kWh	45.9kWh/ 5.5kWh	NA
Power souce	1 or 2	1	1	1	2	2	1
Dimensions	750*880*1,225mm	640*699*1,149.2mm	1,574*787*1,391mm	700*804*1,154mm (With standard operation panel)	689*932*1,220mm	650*799*1,155mm	961*615*693mm
Weight	Less than 250kg	151.9kg	274kg	240kg	322kg	221kg	113kg
Other functionality	Remote access Book copy 3 edge full bleed	Remote access		Remote access Preview function Face authentication	Remote access	Book copy Preview function	Preview Function job skip Background color
Please see section 11. Competition for detailed side-by-side comparisons.							

Comparison

Below is a list of all the products that the MP C6503SP and the MP C8003SP are compared to. For more detailed side-by-side comparisons in between the MP C6503SP and the MP C8003SP with respective competitors' products, please see section 11. "Competition".

Section 11 compares the MP C6503SP to:

- Canon iR ADVANCE C7270i
- Konica Minolta bizhub C654e and C658
- KYOCERA TASKalfa 6551c
- Sharp MX-6240N,
- Toshiba e-STUDIO6570C,
Xerox C60 Printer

Section 11 compares the MP C8003SP to:

- Canon iR ADVANCE C7280i
- KYOCERA TASKalfa 7551ci
- Sharp MX-7040N and MX-7500N
- Konica Minolta bizhub C754e
- Xerox WorkCentre 7970i
Xerox C70 Printer



5. Configuration

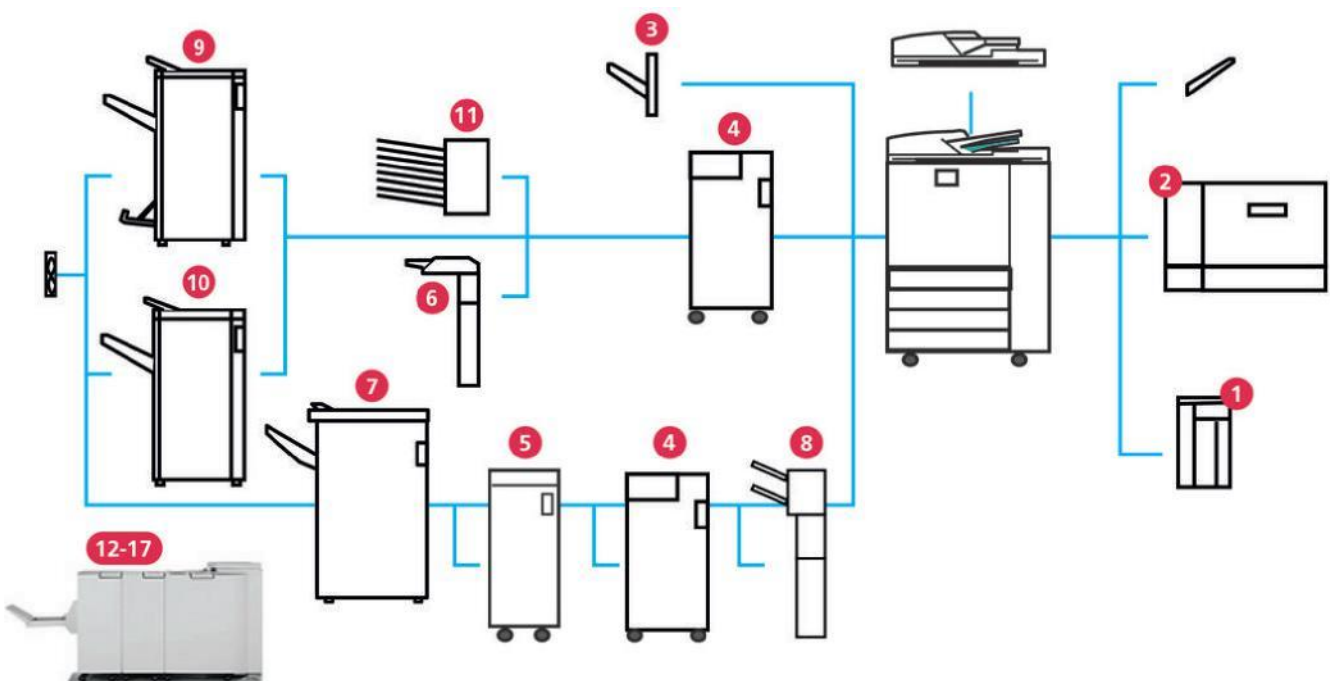
EDP Codes and Dependencies

The new models are floor-standing MFPs. They offer colour print, copy and scan functionality as standard. Fax is an option. They are equipped with a 220 sheet single-pass duplex feed (SPDF), a 2 x 1,250 sheet tandem tray, 2 x 550 sheet paper trays and a 100 sheet bypass. Double-sided output is produced at full engine speed. The new MFPs are workflow enabled. They feature Nashuatec's latest 10.1" Smart Operation Panel and are supplied with hard drives and a VM card.



- 1 = 220 sheet SPDF
- 2 = 10.1 inch Smart Operation Panel
- 3 = USB/SD card slot
- 4 = 100-sheet bypass tray
- 5 = Duplex [internal, not shown]
- 6 = 2 x 1,250-sheet tandem-style paper tray
- 7 = 550-sheet paper tray
- 8 = 550-sheet paper tray

Please note, the Cover Interposer (CI4040) and 9-bin Mailbox (CS4010) cannot be installed in the same configuration.



- 1 = 4,400 sheet A4/LT LCT (RT4020)
- 2 = 2,200 sheet SRA3/DLT LCT (RT4030)
- 3 = 500 sheet copy tray (Type M2)
- 4 = Multi folding unit (FD4000)
- 5 = GBC StreamPunch Ultra (GBC SP Ultra MP)
- 6 = Cover sheet interposer (CI4010)
- 7 = 3,000 sheet finisher (SR4080)
- 8 = Cover sheet interposer (CI4040)
- 9 = 2,000 sheet booklet finisher (SR4130)
- 10 = 3,000 sheet finisher (SR4120)
- 11 = 9-Bin mailbox (CS4010)
- 12 = Plockmatic Booklet Maker (PBM350m)
- 13 = Plockmatic PBM-m trimmer
- 14 = Plockmatic PBM-m book folder
- 15 = Plockmatic cover feeder
- 16 = Plockmatic book stacker
- 17 = Plockmatic rail unit

6. Target Markets

Nashuatec's new high speed colour MFPs are designed primarily for use as departmental devices in the general office. Target markets include businesses and organisation. When configured with the multi-folding unit and other productive in-line finishing options, the new models can also be positioned as light production systems. Vertical markets will include utilities, local government, pharmaceutical companies and legal and financial firms. These documents may include invoices, compliance statements and legal packs which, using the genuine IPDS print option, can be printed directly from mainframe computer systems.

Business Driver	Nashuatec Solution	Customer Benefit
Communicate effectively	→ Vibrant, high resolution colour	→ Add impact to documents
Improve responsiveness	→ Human detection sensor	→ Instantly ready for use
Increase capacity	→ 65 ppm or 80 ppm throughput	→ Handle large document volumes
Speed job turnaround	→ Inline finishing systems	→ Reduce production time
Enhance user experience	→ 10.1" Smart Operation Panel	→ Friendly and familiar interface
Simplify operation	→ Intuitive User Interface	→ Smart apps simplify use
Support mobile workforce	→ Smart Device Print and Scan app	→ Print and scan from smartphones
Safeguard security	→ Support for StreamLine NX	→ Effective governance



7. Key Features

Mainframe - MP C6503SP/MP C8003SP		
Feature	Advantage	Benefit
I-Style design	The new MFPs follow Nashuatec's I-Style design concept. Operational areas, such as the touchscreen display and delivery area, are emphasised in black.	Smart appearance accentuates compact design and looks professional in a modern work environment.
Uniform platform	They share a similar appearance and the same operating system and user interface as other Nashuatec MFPs.	Can be sold as part of a uniform enterprise wide solution. Users are instantly familiar with the intuitive operating system.
Multifunctional	The new MFPs offer 4-in-1 functionality. The machines are print, copy and scan enabled. Fax is an option.	Replace personal printers and other desktop devices, saving space and money.
Modular options	A variety of modular options, which include a stream punch, multi folding unit, cover interposer and booklet finisher, allow the MFPs to be tailored to specific operational requirements.	Fast and affordable in-house production of brochures, manuals and banners.
Operation - MP C6503SP/MP C8003SP		
Feature	Advantage	Benefit
Next Generation (GWNX) controller	Nashuatec's GWNX controller, with its superfast Intel® Atom Processor BayTrail-I 1.91GHz processor, manages the workflow.	Common interface automates workflow, establishes governance and enforces security.
10.1' SuperVGA panel	Large, high visibility touchscreen panel - there are no hard buttons - which can be tilted for easy operation.	Large screen provides a bigger viewing area.

Smart Operation Panel	The touchscreen is navigated with touch gestures, much like a smart phone or tablet.	Simplifies operation, improving the user experience.
Intuitive User Interface	Intuitive applications, navigated using flick and pinch-in/out gestures, make it easy to select copy, scan and fax settings.	Simplifies operation and provides a smooth transition from Nashuatec's 'classic' user interface.
Quick Copy app	A full-screen core application that simplifies the copy process by enabling easy selection of standard copy settings, such colour, paper source and quantity.	Quickly and easily select copy settings.
Quick Scan app	Another full-screen core application that simplifies the scanning process by enabling easy selection of standard scan settings and prompting the user for a file destination.	Quickly and easily select scan settings.
Quick Fax app	The Quick Fax app provides similar functionality to Quick Scan but also prompts the user for a fax number (requires fax option).	Quickly and easily select fax settings.
Customisable home screen	Users can customise the interface, changing the wallpaper, dragging shortcuts to the home screen, installing useful widgets and downloading additional workflow applications directly from Nashuatec's Application Site.	Customisation helps to improve the user experience.
Application Site	The Application Site icon on the Smart Operation Panel is the gateway to Nashuatec's Application Site. Tapping on the icon, the user can browse and install additional workflow applications.	Tailor the MFP to operational requirements and simplify everyday document processes.
Home screen folders	Folders can be created on the home screen. This allows icons to be organised logically and located quickly. For repetitive tasks requiring multiple settings, storing all the required program icons in the same folder can save a lot of time.	Simplifies navigation, saving time.
Intelligent widgets	Widgets can be added to the home screen that show the date and time, environmental metrics, toner supply levels, language settings and which notify users of incoming fax messages.	Essential information is available at glance.
Web browser	A standard feature of the Smart Operation Panel, the Web Browser provides direct access to the web. It can be used to view and print content and install workflow applications. With its inbuilt speaker, it can even be used to watch training videos.	Enables easy access to cloud-based content.

Workflow enabled	The Smart Operation Panel provides an intuitive interface for optional workflow solutions, such as StreamLine NX .	Easily implement enterprise workflow and cost management solutions.
Productivity - MP C6503SP/MP C8003SP		
Feature	Advantage	Benefit
Human detection sensor	Senses when a user is in front of the machine and wakes the operation panel from sleep mode.	With the operation panel instantly ready (1 second recovery time), the operator can start selecting applications and settings sooner.
Quick warm up	Ready to print within 60/60 seconds (MP C6503SP/MP C8003SP).	Saves time and improves productivity.
Fast first page	MP C6503SP produces its first page in 5.5/7.5 seconds (BW/FC) and MP C8003SP in just 4.8/6.4 seconds (BW/FC).	Eliminates bottlenecks as one-off prints and copies are delivered at speed.
VCSEL technology	MP C6503SP and MP C8003SP incorporate VCSEL technology. The conventional 2-beam laser technology used by competitors has been replaced a dual array of vertical cavity surface emitting lasers (VCSEL) which emits 40 interlaced laser beams.	Unlike some competitor machines, which slow down to print in high resolution, MP C6503SP and MP C8003SP produce 4,800 x 1,200 dpi colour output at full engine speed.
65 ppm and 80 ppm colour print engines	MP C6503SP prints in full colour at a speed of 65 ppm and MP C8003SP at a speed of 80 ppm.	Multi page documents colour are produced quickly, supporting workgroup and production needs.
100% duplex productivity	The new MFPs are equipped with high speed duplexes and maintain full productivity when printing double sided.	Improves productivity and professionalism.
Continuous paper feed	The standard paper capacity of 3,700 sheets can be expanded to 8,100 sheets with the addition of the optional 4,400 sheet A4 LCT.	To maintain productivity, the machine automatically switches from one tray to another, and paper can be replenished without pausing production.
On-the-fly toner replenishment	A hopper system allows MP C6503SP and MP C8003SP to continue printing whilst toner is replenished.	Toner can be replenished on-the-fly for non-stop printing.
Image Quality - MP C6503SP/MP C8003SP		
Feature	Advantage	Benefit
4,800 x 1,200 dpi resolution	VCSEL technology enables MP C6503SP and MP C8003SP to produce best-in-class 4,800 x 1,200 dpi (2-bit 1200 dpi colour).	High resolution print is produced at full engine speed, improving print quality and productivity.
PxP EQ chemical toner	Nashuatec's PxP EQ chemical toner, with its small, uniformly sized toner particles supports high resolution printing with fine colour gradation and wide colour gamut.	MP C6503SP and MP C8003SP produce smoothly graduated images with vibrant lifelike colours.

Optical waveform correction	Optical waveform correction technology is used to keep the VCSEL beam emission levels constant by automatically regulating the volume of electrical current.	Using this method of correction, the new print engines can produce incredibly fine, well defined vertical lines.
Reduced colour shift	Nashuatec's VCSEL technology automatically corrects optical bowing and skewing by adjusting the laser beam in the paper feed direction.	Eliminates colour shift to improve image quality.
Accurate registration	Magnification correction adjusts registration in the paper feed direction (left to right) and pixel clock frequency adjusts registration in the scanning direction (top to bottom) to ensure accurate front-back registration.	Accurate front-back registration means that MP C6503SP and MP C8003SP can be used to print high-quality customer-facing collateral, such as brochures, flyers and direct mail, in-house.
Paper Handling - MP C6503SP/MP C8003SP		
Feature	Advantage	Benefit
A3 print engine	The new MFPs handle paper formats from A6 (90 x 140 mm minimum) to SRA3 and banner (330 x 1,260 mm maximum).	Single device can meet A4 and A3 print requirements.
Large paper capacity	The standard paper capacity of 3,700 sheets (2 x 1,250 sheet tandem + 2 x 550 sheet trays + 100 sheet bypass) can be expanded to 8,100 sheets with the addition of a 4,400 sheet A4 LCT.	Hold different paper formats and stock online and reduce downtime related to paper replenishment.
Auto tray switching	The MFPs can automatically switch from one tray to another.	Replenish paper without interrupting the print process.
SRA3 support	MP C6503SP and MP C8003SP can print colour graphics, complete with crop mark, onto heavyweight SRA3 paper.	Trim SRA3 to produce full-bleed double-width A4 brochures and magazines.
3-edge full-bleed printing	With full-bleed mode selected, it is even possible to print full-bleed to three-edges of pre-cut media.	Tape/glue-bound documents (left margin) can be printed full-bleed (top, right and bottom) without need for trimming.
100 sheet multi-bypass	The standard multi bypass tray will hold 100 sheets of paper.	Quickly feed non-standard media such as letterhead paper, labels and envelopes.
Banner printing	The bypass feed supports banner stock of up to 320 x 1,260 mm.	Print colour banners and signage in house.
Thick media	The regular paper trays support paper weights of 52 to 256 gsm and the bypass supports paper weights of 52 to 300 gsm.	Print reliably onto letterhead paper, bond stock and other heavyweight media.
Finishing Options - MP C6503SP/MP C8003SP		
Feature	Advantage	Benefit
Finisher SR4110	This finisher has a 3,000 sheet shift tray and will staple up to 100 sheets. A 2/4 hole punch and a jogger are offered as options.	This is a heavy duty finisher which maintains 100% productivity when punching and stapling and provides capacity for long periods of unsupervised operation.

Finisher SR4120	This finisher has a 3,000 sheet tray and will staple up to 65 sheets. A 2/4 hole punch and a jogger are offered as options.	A lower cost alternative to SR4110, targeted at applications in the general office.
Booklet Finisher SR4130	This finisher has a 2,000 sheet tray and will staple up to 65 sheets, including Z-fold documents produced using the optional multi folding unit. It can also fold and saddle stitch up to 15 sheets of paper to make 60 page booklets. A 2/4 hole punch and a jogger are offered as options.	Doubling as a regular staple finisher and as a booklet maker, it enables office users to produce neatly folded booklets.
Mail Box CS4010	This is a 9-bin mailbox that can be attached to the SR4120 finisher or SR4130 booklet maker. Each tray will hold up to 100 sheets.	Ideal for the office environment, it allows users to route finished print jobs to a specific mailbox.
Multi-Folding Unit FD4000 (insert diagram)	The multi-folding unit supports 6 fold patterns: 2-fold, 3-fold in and 3-fold out (1 to 3 sheets), Z-fold, gate-fold and double parallel-fold (single sheet). The fold position can be adjusted via the operation panel.	Saves time by automating the folding process. The 'letter-out' fold will, for example, enable customers to print and fold letters, invoices and statements ready for insertion into DL sized window envelopes.
Cover Interposer Tray CI4020/CI4040	The interposers enable pre-printed sheets to be inserted into live job streams for collation and finishing.	Improves impact and professionalism.
GBC StreamPunch Ultra MP	Full-speed in-line system punches print output in a variety of professional formats including 12-hole Velobind, 20/21-hole Comb Bind and 23/34-hole Wire Bind. New features include double punch setting for increased productivity and expanded media sizes.	Eliminates need for manual post-production drilling.
Plockmatic booklet maker (PBM350-m option, requires SR4110)	The Plockmatic booklet maker produces booklets of up to 35 sheets / 140 pages with a magazine fold. The booklet maker will handle media sizes of up to 320 x 457mm and media weights of up to 300 gsm and will produce up to 1800 booklets an hour.	The Plockmatic booklet making system reduces the need for manual finishing and adds value to finished booklets. It can be easily detached from the printer when not required and used off-line.
Plockmatic PBM500-m (upgrade option, requires PBM350-m)	This option expands the number of pages that can be handled, enabling the booklet maker to produce booklets of up to 50 sheets / 200 pages.	Produce larger booklets.
Plockmatic book fold module (option, requires PBM350-m plus PBM Trim Module is highly recommended)	The optional Plockmatic book folder creates booklets with a square-back spine.	Adds value by creating booklets with a square-back spine that can be indexed for easy identification.
Plockmatic cover feeder (option, requires PBM350-m)	The optional Plockmatic cover feeder adds pre-printed, laminated or embossed covers to the document set. The unit feeds up to 200 sheets and will feed the same media sizes and weights as the booklet maker.	Adds value by adding high quality covers to booklets and magazines.
Plockmatic trim module (option, requires PBM350-m)	The optional Plockmatic fore-edge trimmer guillotines up to 16mm off the fore-edge (opening edge) of booklets.	Improves the appearance of booklets and magazines.

Connectivity - MP C6503SP/MP C8003SP		
Feature	Advantage	Benefit
Network ready	The new MFPs are equipped with a gigabit ethernet interface and there are parallel, wireless and bluetooth interface options.	Workgroup users can share the same device, improving access.
USB device server	The USB device server (option) provides a secondary network interface port which allows the MFPs to connect simultaneously to two print networks.	Support customers, such as banks, hospitals and schools, who run separate open and closed networks.
Wireless Direct	The panel is also equipped with a WiFi card that supports fast and secure connection with smart devices.	Supports Bring Your Own Device (BYOD) by enabling easy connection with smart phones and tablets.
Smart Device Connector	A free app that enables users to connect their smart devices to a Nashuatec MFP, interactive whiteboard or projector using NFC, QR code or Bluetooth. Once connected to an MFP, their smart devices can be used as an interface to print and scan documents and send fax messages (requires fax enabled MFP).	Improves access to technology, simplifies information exchange and facilitates mobile working.
Smart Device Print and Scan	Another free Nashuatec app that enables documents to be printed and scanned remotely using smartphones and tablets.	Improves access and mobility.
Printing - MP C6503SP/MP C8003SP		
Feature	Advantage	Benefit
Point and print icons	The standard PCL print driver and optional PS3 print driver have graphic icons which allow single click selection of complex settings.	Simplifies the print process, saving time.
Scheduled print	Users can specify a time at which documents are to be printed.	Reduces bottlenecks. Time-consuming jobs such as invoice runs can be scheduled to run overnight or at the weekend.
PostScript 3 (option)	A genuine PostScript driver is available as an option.	Print PostScript, PDF and XPS files accurately.
PDF direct print	PDF documents can be printed directly to the PostScript enabled printer. The files are processed by the printer rather than the PC.	Releases computer resource and reduces network traffic.
XPS direct print (option)	MP 6503SP, MP 7503SP and MP 9003SP also support XPS direct print. XPS is an XML based document format similar to PDF, promoted by Microsoft.	Compatible with newly emerging print format.
IPDS print (option)	The genuine IPDS option enables fast, error-free bi-directional communication with mainframe (host) computer systems.	Improve ROI by printing transactional data such as invoices and statements.

Mail to Print (fax capability required)	Send an email with attached data directly to the MFP for printing.	Improves access and simplifies print process.
Shared Folder Print (Smart app)	Preview and print PDF, Compact PDF and JPEG files stored in a shared folder (Windows OS) from the Smart Operation Panel.	Print brochures, POP and other regularly used documents on demand.
Portable Media - MP C6503SP/MP C8003SP		
Feature	Advantage	Benefit
USB/SD card reader	There is a USB/SD card reader located to the side of the control panel.	Improves access by enabling walk up users to print from / scan to flash memory.
Print from Storage Media	Documents stored on a USB/SD card can be previewed on the Smart Operation Panel and printed. The intuitive user interface helps the user to select appropriate print settings and to preview and print documents.	Documents held on portable media are printed more easily.
Scan to Storage Media	Scanned documents can be previewed on the Smart Operation Panel and saved to a USB/SD card. The intuitive user interface helps the user to select appropriate scan settings and to preview and save documents.	Documents are easily saved to portable media.
Scanning - MP C6503SP/MP C8003SP		
Feature	Advantage	Benefit
Single pass duplex feed (SPDF)	The new MFPs are equipped with a high capacity SPDF (single pass duplex feed). Up to 220 documents can be fed in a single batch. The SPDF scans both sides in single pass. Colour and B&W documents are scanned at a speed of 120 ipm (simplex) and 220 ipm (duplex).	Speeds scanning process. Particularly useful in applications where large batches of documents are regularly scanned or copied.
Flatbed scanner	Books and photographs can be scanned directly from the platen glass.	It is easy to scan bound or mounted originals such as books and photographs.
Book scanning app	New app erases shadows, enabling books and loose sheet originals to be scanned with the SPDF open.	Speeds job build and improves image quality.
Colour scanning	The new MFPs scan documents in full colour at a resolution of up to 600 dpi.	Share information instantly via email and save documents to document server or to a centralised electronic record.
Document server	The new MFPs have an integral document server, which can be used to archive up to 3,000 documents or 15,000 pages.	Reduce costs by printing regularly used documents on demand instead of holding shelf stock.
Distributed scan management (DSM)	The administrator can pre-set scanning conditions and destinations for users.	Simplifies the scanning process.

Searchable PDF (requires OCR option)	The document text is recognised and saved along with the original document.	Improves access to information as documents can be searched for using keywords, and text within the document can be edited.
Encrypted PDF transmission	PDF documents scanned to e-mail, saved to the document server or to another network location can be encrypted and password protected.	Protects confidential information.
PDF/A	PDF/A is an ISO standard for the long-term archiving of electronic documents. The format locks the document to maintain its originality and records within the document a 'Device Certificate'.	Document format complies with government and industry regulatory standards.
Enhanced encryption level	The user can select secure encryption algorithms. Supported algorithms include AES256bit (used by the US government, NESSIE in the EU and CRYPTREC in Japan) and SHA-2 (used by the US National Security Agency).	Encryption complies with government and industry regulatory standards.
Scan to Me (Smart app)	One-click app enables users to scan documents directly to an email address associated with their logon details.	Scan documents directly to email.
Scan to Folder Helper (Smart app)	Helps the user to setup a unique folder in which they can save scanned documents for fast, convenient access at a later date.	Easily configure Scan to Folder settings.
Scan to SharePoint (Smart app)	Allows users to select a SharePoint folder as a scan destination. Users with administrative privileges can add/edit/delete SharePoint server destination	Scan documents directly to a SharePoint server.
Easy Scan Size Match (Smart app)	Enables users to use Scan Size feature of the scanner more easily. Users can scan different size originals and select whether they are to be saved to their original page size or to the same page size.	Scan different sized originals to the same page format.
ID Card Scan & Copy (Smart app)	Both sides of the ID card can be scanned and stored as a single page. The scanned data can be sent to a specific folder, email address or can be printed.	Scan both sides of an ID card to one page.
Copying - MP C6503SP/MP C8003SP		
Feature	Advantage	Benefit
Scan once, copy many	Copies are produced from memory.	Each copy is identical to the first.
Electronic sorting	Copies and prints are delivered in page order.	Saves time as sets are collated ready for distribution.
Digital zoom	25 to 400% zoom with 1% steps plus 13 preset enlargement / reduction ratios	One-step enlargement / reduction between A4 and A3 formats, saves time.

Combine copy	Scan two or four originals and print them as tiled copies on one sheet of paper.	Reduce print and paper costs.
Easy Book Copy (Smart app)	Users can make high quality copies of bound documents with the document feed open. The wizard helps the user navigate settings that delete shadows from the spine and border.	Enhances copy quality when copying books.
Easy Copy Size Match (Smart app)	Enables users to copy different size originals and select whether they are to be reproduced in original page size or to the same page size. The app supports automatic enlargement and reduction.	Copy different size originals to the same page format.
ID Card Copy (Smart app)	The wizard guides users through each step of the process, making it easy to copy the front and back of an ID card onto a single sheet of paper.	Copy both sides of an ID card to a single sheet.
Conference Concierge (Smart app)	Easy-to-follow on-screen instructions guide users through the process of creating professionally presented copies of key documents. Includes orientation, colour, stamps and finishing.	Easily create neatly finished documents.

Fax - MP C6503SP/MP C8003SP

Feature	Advantage	Benefit
Fax functionality	Fully featured plain paper fax machine.	Eliminates the need for a separate standalone fax machine, saving money and space.
Fast transmission	An A4 fax message can be transmitted in 2 seconds.	Fast transmission saves the user time and reduces line charges.
Book fax	Bound documents, such as brochures and reports, can be faxed directly from the platen glass.	Saves time as there's no need to breakdown bound documents for faxing.
Quick dial	There is the facility to save 2,000 quick dial numbers.	Speeds communication with regular contacts.
Remote fax (option)	Allows the new MFPs to send faxes via another fax enabled Nashuatec MFP.	Reduces configuration cost and enables multiple MFPs to share a single fax line.

Security - MP C6503SP/MP C8003SP

Feature	Advantage	Benefit
NFC Card Reader (option)	An optional NFC (near field communication) card reader can be installed inside the top panel of the MFP. The reader supports ID card authentication.	Protects security by requiring ID card based authentication.
Quick Authentication	Nashuatec's swipe-and-go card-based authentication software is pre-installed and only requires the purchase of an optional NFC Reader/Writer.	Simplifies login whilst controlling access to MFP features.

Data Overwrite Security	Overwrites temporary data held on the hard drive up to nine times with random data.	Protects security by ensuring that temporary data cannot be recovered.
HDD Encryption	Encrypts the address book, authentication information and stored documents.	Protects security by encrypting documents.
FIPS certified HDD (option)	The standard hard drive can be replaced with an optional HDD that is certified to meet the Federal Information Processing Standards (FIPS). These are U.S. government computer security standards that specify requirements for cryptography modules.	Suitable for use in secure environments such as by government agencies and in industries that are subject to strict security compliance.
Quota scheduling	The administrator can limit the output of individual users and user groups by setting page count limits. This feature now allows quotas to be shared across multiple Nashuatec devices.	Establishes governance over the print environment and reduces print volume.
Background numbering	With background numbering selected in the print driver, controlled documents are consecutively numbered.	It is easy to ensure that controlled documents are collected at the end of a meeting.
Banner page print	A job sheet can be printed before a print job that identifies the originator.	Makes it easier to identify work in a busy environment.
Mandatory hold print	When mandatory hold print is activated by the administrator, print output is held in the document server until released at the printer by the originator.	Protects confidentiality and reduces waste.
Mandatory security information	Automatically append security information such as the user ID, date, time, IP address and printer serial number to every document printed.	Improves document security by establishing a printed audit trail.
Fax output timer (requires fax option)	The administrator can set a time schedule for fax output. Fax messages are held in memory and printed at the predetermined time.	Reduces the risk of fax messages being read by unauthorised personnel or inadvertently picked up along with other documents.
Environment - MP C6503SP/MP C8003SP		
Feature	Advantage	Benefit
Power on/off timer	The power on/off timer switches the machine on and off at specified times.	Ensures the machine is ready for use and saves energy by switching the machine off when it is not required.
Sleep mode	In energy saving sleep mode, the new devices consume TBA W.	Reduces energy consumption.
Eco-information screen (Smart widget)	A pop-up, visible at the control panel, reports green metrics, such as the number of double sided prints.	Encourages sustainable print behaviour.
Noise suppression	New sound suppression technology reduces operating noise by between 40% and 60%.	The new MFPs are comfortably the quietest in their class.

Energy Star v3 and BAM	The new MFPs are compliant with the latest environmental standards, including Energy Star v3 and Blue Angel Mark.	Don't just take Nashuatec's word for it; third certification proves that these devices are eco-
-------------------------------	--	--

8. Specifications

MP C6503SP/MP C8003SP specifications				
GENERAL	Warm-up time	40 seconds		
	First output speed	Full colour	7.5/6.4 seconds	
		B/W	5.5/4.8 seconds	
	Continuous output speed	Full colour	A4 and A4 duplex	65/80 pages per minute
		B/W	A4 and A4 duplex	65/80 pages per minute
	One to one copy speed	Full colour	A4 and A4 duplex	65/80 copies per minute
		B/W	A4 and A4 duplex	65/80 copies per minute
	Memory	Standard	4 GB	
	HDD	640 GB		
	Duty cycle	300,000 prints per month		
	Life	5 years or 9,000 output		
	Duplex	Standard		
	Reproduction ratio	400%, 200%, 141%, 122%, 115%, 100%, 93%, 87%, 82%, 71%, 61%, 50%, 25%		
	Zoom	From 25% to 400% in 1% step		
	Accessibility features	Easy touch screen		
		Normal/reverse grip and light drawing		
		Scanner separation		
		Tilt operation panel		
		Printer driver (PCL6) screen reader		
		Simplified display		
Auditory outputs (easy to hear)				
Barrier-free colour management mode				
	Visually accessible LED placement			
Dimensions (W x D x H)	750 x 880 x 1,225 mm			
Weight	250 kg			
Power source	220 - 240 V, 50/60 Hz			

COPIER	Multiple copying	Up to 9,999 copies		
	Resolution	300 dpi, 400 dpi, 600 dpi, 1,200 dpi, 300 x 300 dpi, 300 x 600 dpi, 600 x 600 dpi, 1,200 x 600 dpi, 1,200 x 1,200 dpi, 1,200 x 4,800 dpi		
	Zoom	From 25% to 400% in 1% steps		
	Number of copy reservations	8 reservations		
	Enhanced features	Colour mode	Default = Black and White mode, Black and White, Auto Colour Selection (ASC), Full Colour, Single Colour, Two colour	
		Colour mode	Default = Black and White mode, Black and White, Auto Colour Selection (ASC), Full Colour, Single Colour, Two colour	
		Paper selection	Default = Auto Paper Selection , Auto Paper Selection, 1st tray, 2nd tray, 3rd tray, LCT, Bypass tray	
		Auto tray switch		
		Duplex	1 sided to 2 sided, 2 sided to 2 sided with ARDF, Book to 2 sided, Front and back to 2 sided	
		Book	Booklet, Magazine, Layout and Booklet	
		Series	Book to simplex, 2 Sided original to simplex	
			2 Sided original to simplex	
		Combine	2 into 1 simplex, 4 into 1 simplex, 8 into 1 simplex, 1 duplex into 1 simplex, 2 duplex into 1 simplex, 4 duplex into 1 simplex, 4 into 1 duplex, 8 into 1 duplex, 16 into 1 duplex, 2 duplex into 1 duplex, 4 duplex into 1 duplex, 8 duplex into 1 duplex	
		Shift/erase/margin adjustment	Centering	
			Margin adjustment	
			Erase center	
			Erase border	
Scan Position Adjustment				
Creep Adjustment				
Cover sheet/chapter/slip sheets	Front cover, Front and back cover, Chapter, Slip sheets, OHP slip sheets			
Image rotation				
Electronic sort	Without shift sort, Rotate sort, shift sort			
Electronic stack	Yes, only with finisher			

COPIER	Enhanced features	Stapling	
		Colour creation, Image creation, Stamp/numbering	
		Colour balance adjustment	
		Colour balance program	
		Auto Colour Calibration	
		Sharp/soft	7 levels
		Contrast	9 levels
		Background density adjustment	9 levels
		Under Colour Removal adjustment	9 levels
		Text and photo separation sensitivity adjustment	9 levels
		Colour erase sensitivity adjustment	5 levels
		Job programs	Standard 25 jobs
		User code	8 digits / 1,000 user code
		Interrupt copy	
		Interrupt job	
		Auto start	
		Job preset	8 jobs
		Program mode	
		Sample copy	
		Simplified display	
		Login/logout button	
		SMC report print out	
		NRS option	
		Document server	
		Auto off timer	
		Energy saver timer	
		System reset timer	
		Left original detection	
		Job Interrupt	
		Special paper display	
		2 language panel switch	
		Auto magnification selection	

PRINTER	RAM	Standard	4 GB	
	HDD	Standard	640 GB	
	Printer language	Standard	PCL5e, PCL6, PDF Direct Print	
		Option	Adobe® PostScript® 3™, XPS, IPDS	
	Print resolution	300 x 300 dpi, 600 x 600 dpi, 1,200 x 1,200 dpi, 1,200 x 4,800 dpi		
	Fonts	PCL, PS3, IPDS		
	Interface	Standard	SD slot, USB Host I/F, Wireless LAN IEEE 802.11b/g/n, Bluetooth, Ethernet 10 base-T/100 base-TX/1000 base-T	
		Option	Bi-directional IEEE 1284, Wireless LAN IEEE 802.11a/b/g/n)	
	Network protocol	TCP/IP	IP v4	
			IP v6	
	Windows® environments	Windows® Vista/7/8/Server 2003/Server 2003R2/Server 2008/Server 2008R2/Server 2012/Server 2012R2		
	Mac OS environments	Macintosh OS X v10.7 or later		
	UNIX environments	UNIX Sun® Solaris, HP-UX, SCO OpenServer, RedHat® Linux, IBM® AIX		
	SAP® R/3® environments	SAP® R/3®		
	Other supported environments	AS/400® using OS/400 Host Print Transform, IBM iSeries		
Printer driver features	Sample print, Locked print, Hold print, Scheduled print, Stored print, Store and print, Reduce/enlarge(zoom/scaling), Fit to paper size, Unauthorized copy control, Layout (N-up, page per sheet), Poster, Duplex, Booklet2 (magazine), Watermark, Adjust image position, Collate, Punch, Staple, Cover sheet (front cover), Front and back cover, Slip sheet, Chaptering, Rotate by 180 degrees, Reverse order print, Do not print blank pages, Dithering, Toner saving, Black over print, CLP colour simulation, Print priority setting: quality, Print priority setting: speed, Print priority setting: high speed, User ID, User code, User authentication, Encryption/encoding, Mirror image print, Negative image print, Edge to edge print, Limitation setting, PDF direct print, Mail to print, Classification code, Bonjour (Rendezvous) support, Windows® Active Directory support, DDNS support, PCL resident font adoption, Tray-parameter change from Web Image Monitor, 1,200 dpi support, XPS support, WS printer, Wireless LAN interface option, Media Direct Print (print from USB), Media Direct Print (print from SD), Auto Job Promotion, AirPrint, Poster Print			

SCANNER	Scanning speed	Maximum 120 originals per minute	
	Resolution	Standard	100/200/300/400/600 dpi
	Scan mode	Standard	B/W text/line art, B/W , text B/W text/ photo, B/W photo, B/W grayscale, Full colour text, Full colour text/photo, ACS, Full colour glossy photo
	Image density	Auto Density Selection	
		Manual: 7 levels	
	SADF/batch mode		
	Mixed size mode		
	Image rotation		
	Reduce and Enlarge		
	Split scan from booklet type original		
	Digital signature for PDF		
	Original size	A3, A4, A5, B4, B5, B6	
	File format	Single page TIFF/JPEG/PDF/High Compression PDF/PDF-A	
		Multi page TIFF/PDF/High Compression PDF/PDF-A	
	Bundled drivers	Network TWAIN	
	Scanner features	Scan to USB/SD	
		WS-Scanner	
		Scanned file naming	
		Scan file type selection	
		LDAP Support	
		Preview before transmission - TX preview	
		PDF encryption	
		Drop out colour send	
Twain Scan			
Distributed Scan Management			
Scan to		E-mail, folder, USB, SD card, SMB, FTP, URL	

FAX	Circuit	PSTN, PBX	
	Compatibility	ITU-T (CCITT) G3	
	Resolution	Standard	8 x 3.85 line/mm, 200 x 100 dpi
		Detail	8 x 7.7 line/mm, 200 x 200 dpi
		Super fine	8 x 15.4 line/mm, 400 x 400 dpi
		Super fine	16 x 15.4 line/mm, 400 x 400 dpi
	Compression method	MH/PR/MMR/JBIG	
	Transmission speed	G3	2 second(s) (200 x 100 dpi, JBIG)
		G3	3 second(s) (200 x 100 dpi, MMR)
	Modem speed	Maximum	33.6 Kbps
	Memory capacity	Standard	4 MB
		Maximum	8 MB
	Memory backup	Yes	1 hour
	SAF memory size	Standard	4 MB, 320 sheets
		With additional memory	60 MB
	Internet Fax		
	LAN Fax		
	IP Fax		
	Fax features	Smoothing, TTI/RTI, CSI, Quick dial, Speed dial, Group dial, Program, Redial, Direct fax number entry, Dual access, User code, Page counter, Auto reduction, Wild cards, Summer time, Memory Lock ID Code, SID code (sender ID), User function key, Energy saver, LCD prompt, Remaining memory indication, Clock adjustment, User parameter settings, Remote Fax	
	PAPER HANDLING	Recommended paper size	SRA3, A3, A4, A5, A6, B4, B5, B6
Paper input capacity		Standard	3,700 sheets
		Maximum	8,100 sheets
Paper output capacity		Standard	500 sheets
		Maximum	3,500 sheets
Paper weight		Paper tray(s)	52.3 - 256 g/m ²
		A4 LCT	52.3 - 300 g/m ²
		Bypass tray	52.3 - 300 g/m ²
		Duplex	52.3 - 256 g/m ²

SECURITY

Network user authentication
IP address filtering

HDD Data Overwrite Security (with optional HDD)

HDD encryption (with optional HDD)
Authentication
Encryption
Secure print
Encrypted secure print
Encrypted PDF mode
IP Sec
Secure Sockets Layer (SSL)
SNMPv3
IPv6
Transport layer security
Copy Guard Security
Digitally signed PDF
Network security
Unauthorised copy prevention (print)
Unauthorised copy prevention (copy)
Quota Setting/Account Limit
SMTP over SSL
Compulsory security stamp
Security for IEEE802.11i,w
NIB access control
MFP menu protection
Protect stored documents (DS)

ECOLOGY	Sound power level (mainframe only)	Stand-by	Less than 52.5/57 dB		
		Copying	69.8/71.4 dB		
	Sound power level (full system)	Stand-by	Less than 52.5/57 dB		
		Copying	73.8/75.4 dB		
	Sound pressure level (mainframe only)	Stand-by	Less than 46.5/51 dB		
		Copying	63.8/65.4 dB		
	Sound pressure level (full system)	Stand-by	Less than 46.5/51 dB		
		Copying	67.8/69.4 dB		
	Power consumption	Maximum	2,400 W		
		Operating power	2,400 W		
		Full option maximum power	2,400 W		
		Ready mode	450 W		
		Low power mode	217 W		
		Sleep mode	Less than 1.2 W		
		TEC (Typical Electricity Consumption)	5,050/6,470 Wh		
	Material emission level (emission rate)	Ozone (Print)	FC	Operation: 3 mg/h	
			BW	Operation: 1.5 mg/h	
		Dust (Print)	FC	Operation: 4 mg/h	
			BW	Operation: 4 mg/h	
		Styrene (Print)	FC	Operation: 1.8 mg/h	
			BW	Operation: 1 mg/h	
		TVOC (Print)	FC	Operation: 18 mg/h	
			BW	Operation: 10 mg/h	
		TVOC (Ready)	Desktop	Operation: 2 mg/h	
			Floor type	Operation: 2 mg/h	
		Benzene (Print)	FC	Operation: 0.05 mg/h	
			BW	Operation: 0.05 mg/h	
		Environmental labels/ENERGY STAR certification	BAM		
			ENERGY STAR version 1.1		
	ENERGY STAR version 2.0				

ECOLOGY	Storage conditions	Temperature	-30°C - 40°C
		Humidity	Less than 80%
		Storage period	Maximum 12 months
	Transportation conditions	Temperature	-30 - 45°C
		Humidity	Less than 95%
		Maximum stack	2 cartons
OPTIONS	2,000-sheet large capacity tray		
	A4/LT large capacity tray		
	3,000-sheet finisher with 100-sheet stapler		
	2,000-sheet booklet finisher		
	Punch kits		
	9-bin mailbox		
	Cover interposer		
	Copy tray		
	Jogger unit		
	Plockmatic booklet maker		
	GBC Streampunch™ III		
	Bi-directional IEEE 1284		
	Wireless LAN (IEEE 802.11a/b/g/n)		
	Bluetooth		
	Netware		
	PostScript3		
	IPDS unit		
	File format converter		
	Fax Connection Unit		
	Fax memory		
Network controller			
G3 Interface unit			
CONSUMABLES	Toner capacity	Black	47,000 prints
		Cyan	26,000 prints
		Magenta	26,000 prints
		Yellow	26,000 prints



9. Service and Supplies

The new MFPs should be maintained by trained service engineers. Like other Nashuatec MFPs, service is likely to be offered on a toner inclusive Pay per Page (PpP) basis.

PpP servicing offers the following customer advantages:

- Transparent pricing
- Includes toner and servicing
- Pre-agreed page cost
- Metered pay as you go billing

MP C6503SP and MP C8003SP have similar running costs to their predecessors (MP C6502SP and MP C8003SP). Although the running costs are similar, sales people should refer to their service or sales management for actual service pricing.

The new models incorporate technical improvements which

ensure that target yields are met more consistently. A new toner control system optimises toner usage, reducing toner waste and extending toner and waste toner bottle replenishment cycles.

MP C6503SP and MP C8003SP are highly durable. With target MCBCs (mean copies between calls) of 60,000 pages, customers producing 30,000 pages a month might expect to need one service visit every two months on average.

Using @Remote, the devices can be monitored in real-time enabling Nashuatec's service operation to identify issues before they become apparent to users and deliver consumable items such as toner in advance of need.

Consumable yields and service parameters are provided below:

Consumable – MP C6503SP/ MP C8003SP					
Category	Brand	Item	Product Name		EDP Code
Toner	Generic	Toner Black	Print Cartridge Black MP C8003	45,000 prints/bottle	842192
		Toner Yellow	Print Cartridge Yellow MP C8003	27,000 prints/bottle	842193
		Toner Magenta	Print Cartridge Magenta MP C8003	27,000 prints/bottle	842194
		Toner Cyan	Print Cartridge Cyan MP C8003	27,000 prints/bottle	842195
		Waste Toner Bottle	Waste Toner Bottle MP C8003	175,000 prints/bottle	417721

Staples	Generic	Staple Set Cartridge for SR4120	Staple Type V	1 x 5,000 shots	416709
		Staple Set Cartridge for SR4130 (Saddle Stich)	Staple Type W	1 x 2,000 shots	416710
		Staple Refill Cartridge for SR4120	Refill Staple Type V	3 x 5,000 shots	416711
		Staple Refill Cartridge for SR4130 (Saddle Stich)	Refill Staple Type W	4 x 2,000 shots	416712
	Nashuatec	Staple Set Cartridge for SR4110	Staple Type M	1 x 5,000 shots	413013
		Staple Refill Cartridge for SR4110	Refill Staple Type M	5 x 5,000 shots	413026
	NRG	Staple Set Cartridge for SR4110	Staple Type M	1 x 5,000 shots	413014
		Staple Refill Cartridge for SR4110	Refill Staple Type M	5 x 5,000 shots	413027
	Infotec	Staple Set Cartridge for SR4110	Staples XV/1 Set Cartridge	1 x 5,000 shots	413018
		Staple Refill Cartridge for SR4110	Staples XV/2 Refill	5 x 5,000 shots	413031
	Plockmatic	Staple Cartridge	Plockmatic Staple Cartridge (BK5030)	3 x 5,000 shots	404461

